

LEASEHOLD



Flat

# 1 BEDROOM FLAT ON EDGWARE WAY, EDGWARE

## £190,000

### FEATURES

- 1 bedroom top floor retirement apartment
- Private balcony off living room
- Residents communal lounge
- Lifts to all floors
- Newly painted & decorated
- Gated parking area



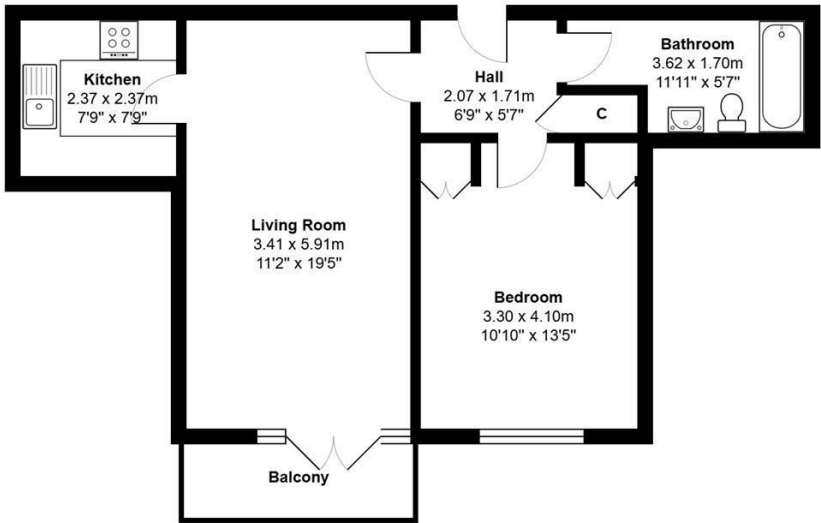
**SPACE**  
RESIDENTIAL

# 1 Bedroom Flat located in Edgware

Space Residential are delighted to offer for sale this freshly painted and decorated top-floor 1-bedroom apartment in a small popular purpose-built block; backing onto parkland.

Available to those over the age of 60 years old only, with independent living arrangements, but also benefiting from an onsite concierge/warden, this super retirement home just needs new carpets and is then ready to move into.

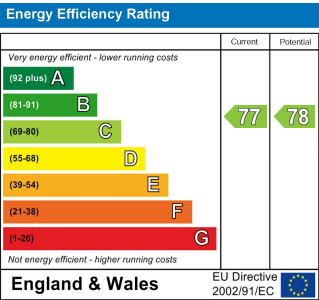
- Benefits include:
- Gated parking
  - 2 Lifts
  - Communal residents lounge
  - In flat emergency monitoring



Total Area: 53.1 m<sup>2</sup> ... 571 ft<sup>2</sup> (excluding balcony)  
All measurements are approximate and for display purposes only

Call us on  
**0208 906 2222**  
[info@spaceresidential.com](mailto:info@spaceresidential.com)  
[spaceresidential.com](http://spaceresidential.com)

Council Tax Band  
**D**



Agents Note: Whilst every care has been taken to prepare these particulars, they are for guidance purposes only. All measurements are approximate and are for general guidance purposes only and whilst every care has been taken to ensure their accuracy, they should not be relied upon and potential buyers are advised to recheck the measurements.

